



## **Forceps**

Straight  
Angled  
Curved  
Colibri  
Swan Neck  
Capsulorhexis  
Cilia  
Muscle  
Iris  
Jewellers  
Clamping  
Utility  
Lens  
Scleral Plug  
Watski

# Forceps

## Moorfields Conjunctival Forceps

STRAIGHT

0101542

standard



0101543

fine



0109015 TITANIUM

standard



0109021 TITANIUM

fine

---

## Stallard Tying Forceps

0101006



---

## Rycroft Corneal Tying Forceps

0101009

plain



0101045

0.3mm teeth



---

## McPherson Tying Forceps, straight

0101017

7mm platform



## McPherson Tying Forceps

STRAIGHT

0109010 TITANIUM

7mm platform



## Birks Tying Forceps, straight

0101103

satin



0101107

0.12mm teeth,  
satin



0109142 TITANIUM

tying



0109152 TITANIUM

tying  
ultrafine tip

0109144 TITANIUM

0.12mm teeth



# Forceps

## Jayle Corneal Tying Forceps

STRAIGHT

0101072  
0.15mm teeth



0101042  
0.3mm teeth



0109012  
0.12mm teeth

TITANIUM



0109011  
0.3mm teeth

TITANIUM

---

## St. Martin Corneal Tying Forceps

0101073  
0.15mm teeth



0101043  
0.3mm teeth

0109162  
0.15mm teeth

TITANIUM



0109172  
0.3mm teeth

TITANIUM

## Bonn Micro Tying Forceps

STRAIGHT

**0101075**  
corneal  
0.12mm teeth



**0109013** TITANIUM  
corneal  
0.12mm teeth



**0101332**  
iris  
0.12mm teeth



**0109014** TITANIUM  
iris  
0.12mm teeth



## Weiss Forceps, slimline

**0109030** TITANIUM  
plain



**0109035** TITANIUM  
tying



**0109028** TITANIUM  
0.25mm notch



**0109029** TITANIUM  
0.12mm teeth



**0109036** TITANIUM  
0.1mm teeth  
forward facing



# Forceps

## Weiss Forceps

STRAIGHT

0109024 TITANIUM

plain



0109026 TITANIUM

tying



0109023 TITANIUM

0.25mm notch



0109025 TITANIUM

0.12mm teeth



0109027 TITANIUM

0.1mm teeth forward facing



## Castroviejo Corneal Tying Forceps

0101074

0.12mm  
forward facing  
teeth



## Castroviejo Tying Forceps

0101049

standard handle  
0.3mm teeth



0101050

standard handle  
0.5mm teeth



## Castroviejo Tying Forceps (cont'd)

STRAIGHT

**0101015**  
wide handle  
plain, delicate



**0101078**  
wide handle  
0.12mm forward  
facing teeth



**0101046**  
wide handle  
0.3mm forward  
facing teeth



**0101047**  
wide handle  
0.5mm forward  
facing teeth

**0101048**  
wide handle  
0.9mm forward  
facing teeth

**0109420** TITANIUM  
delicate



**0109427** TITANIUM  
0.25mm notch



**0109424** TITANIUM  
0.12mm teeth



**0109425** TITANIUM  
0.3mm teeth

**0109426** TITANIUM  
0.5mm teeth

# Forceps

## Daya Forceps

STRAIGHT

**0109018** TITANIUM

tying



**0109016** TITANIUM

corneal toothed



**0109017** TITANIUM

lasik flap



## Harms Tying Forceps, straight

**0101018**

0.5mm tips



## Harms-Jaffe Tying Forceps, straight

**0101020**

0.3mm tips



## Alabama Suture Forceps

**0101003**

with longitudinal serrations



## Catford Corneal Tying Forceps

**0101010**

plain



**0101076**

0.15mm teeth





STRAIGHT

## Hoskins Forceps

**0101162** Hoskins No 10  
0.8mm wide tips  
with notch



**0101163** Hoskins No 11  
0.5mm wide tips  
with notch

**0101164** Hoskins No 15  
0.3mm wide tips  
with notch

**0101166** Hoskins No 17  
suture 0.5mm wide tips  
hemispherical



**0101176** Hoskins No 28  
0.25mm wide tips  
with notch



**0101168** Hoskins No 19  
0.3mm wide tips  
with notch

**0101167** Hoskins No 18  
0.5mm wide tips  
with notch

**0101179** Hoskins No 32  
micro suture, 0.3mm wide  
hemispherical tips



**0101175** Hoskins No 27  
suture, 0.5mm wide  
hemispherical tips

## Lister Conjunctival Tying Forceps

**0101005**  
1.2mm  
forward  
facing teeth



# Forceps

## Weiss Fixation Forceps

STRAIGHT

0101284

1mm teeth  
1/2



## Elschnig Fixation Forceps

0101290

1.2mm teeth  
1/2



## Chauvasse Fixation Forceps

0101294

1.5mm teeth  
5/6



## Graefe Fixation Forceps

0101298

4.7mm wide  
7/8



## Francis Fixation Forceps

0101285

1mm teeth  
2/3



## McPherson Tying Forceps, 7mm angled jaws

ANGLED

**0101011**  
plain



**0101012**  
0.3mm notch



**0101077**  
0.15mm teeth



## McPherson Tying Forceps, angled jaws, short handle

**0109097** TITANIUM  
7mm



**0109096** TITANIUM  
10mm



**0109098** TITANIUM  
12mm



**0109091** TITANIUM  
12mm tip, jaws angled on flat



**0109095** TITANIUM  
10mm  
0.12mm teeth



## McPherson Tying Forceps, angled jaws, long handle

**0109431** TITANIUM  
7mm  
0.3mm notch



**0109432** TITANIUM  
7mm  
0.12mm teeth



# Forceps

## Kelman-McPherson Tying Forceps, angled jaws

ANGLED

0101013

10mm jaws



0101014

12mm jaws



0101052

7mm jaws

0.2mm teeth



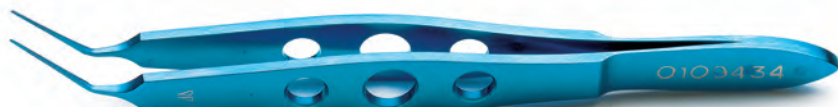
0109435 TITANIUM

7.5mm



0109433 TITANIUM

10mm



0109434 TITANIUM

12mm

## Birks Tying Forceps, angled jaws

0109149 TITANIUM

7mm

0109148 TITANIUM

10mm



0109150 TITANIUM

7mm

0.25mm notch



0109151 TITANIUM

10mm

0.12mm teeth



## Castroviejo Tying Forceps, delicate curved jaws

CURVED

0109421 TITANIUM



## Birks Tying Forceps, curved jaws

0101105

satin



0101109

0.12mm teeth, satin

0109143 TITANIUM

delicate



0109145 TITANIUM

0.12mm teeth



0109180 TITANIUM

0.3mm teeth



## Harms Tying Forceps, curved jaws

0101019

0.5mm tips



## Harms-Jaffe Tying Forceps, curved jaws

0101021

0.3mm tips



# Forceps

## Weiss Forceps, slimline, curved jaws

CURVED

0109075 TITANIUM

tying



0109077 TITANIUM

0.25mm notch



0109078 TITANIUM

0.12mm teeth



## Weiss Tying Forceps, curved jaws

0109073 TITANIUM

delicate



0109072 TITANIUM

0.25mm notch



0109074 TITANIUM

0.12mm teeth

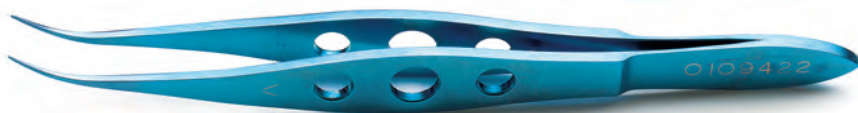


## Max Fine Micro Corneal Forceps, curved jaws

0101008



0109422 TITANIUM





## Birks Colibri Forceps

COLIBRI

**0101111**  
0.12mm teeth  
satin



**0101113**  
notched, satin

**0109147** TITANIUM  
0.25mm notch



**0109146** TITANIUM  
0.12mm teeth



## Castroviejo Colibri Tying Forceps

**0101079**  
wide handle  
0.12mm teeth



**0109423** TITANIUM  
0.12mm teeth



## Colibri Micro Corneal Tying Forceps

**0101365**  
plain



**0101364**  
0.12mm teeth



## Colibri Micro Corneal Forceps

**0101362**  
0.3mm teeth,  
no platform



**0101363**  
0.3mm teeth



# Forceps

## Weiss Colibri Forceps, slimline

COLIBRI

0109068 TITANIUM

tying



0109067 TITANIUM

0.25mm notch



0109061 TITANIUM

0.12mm teeth



## Weiss Colibri Forceps

0109064 TITANIUM

tying



0109063 TITANIUM

0.25mm notch



0109062 TITANIUM

0.12mm teeth



0109065 TITANIUM

0.1mm teeth  
forward facing



## Cross Action Colibri Forceps

0109066 TITANIUM

0.12mm teeth



## Polack Corneal Suturing Forceps

0109070 TITANIUM



## Swan Neck Forceps

SWAN NECK

0109053 TITANIUM

tying



0109052 TITANIUM

0.25mm notch



0109054 TITANIUM

0.12mm teeth

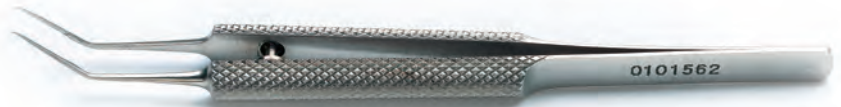


## Capsulorhexis Forceps, round body

CAPSULORHEXIS

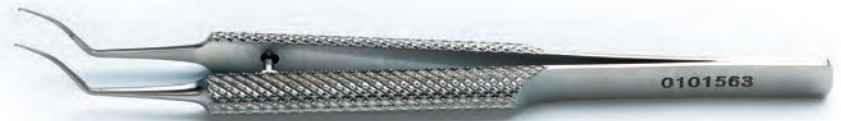
0101562

standard shank  
standard tips



0101563

formed shank  
standard tips



0109121 TITANIUM

standard shank  
delicate tips



0109120 TITANIUM

standard shank  
sharp tips



0109122 TITANIUM

formed shank  
delicate tips



0109123 TITANIUM

formed shank  
sharp tips

# Forceps

## Weiss Capsulorhexis Forceps, slimline

CAPSULORHEXIS

0109131 TITANIUM

standard shank  
serrated standard tips



0109135 TITANIUM

standard shank  
serrated sharp tips

## Capsulorhexis Forceps, wide body

0101564

standard shank  
standard tips



0101565

formed shank  
standard tips



0109112 TITANIUM

standard shank  
delicate tips



0109116 TITANIUM

standard shank  
sharp tips

0109113 TITANIUM

formed shank  
delicate tips

0109117 TITANIUM

formed shank  
sharp tips



## Utrata Capsulorhexis Forceps

CAPSULORHEXIS

**0109437 TITANIUM**

standard shank  
delicate tips



**0109444 TITANIUM**

standard shank  
sharp tips

**0109438 TITANIUM**

formed shank  
delicate tips



**0109445 TITANIUM**

formed shank  
sharp tips

## Cross Action Capsulorhexis Forceps

**0109114 TITANIUM**

standard shank  
delicate tips



**0109118 TITANIUM**

standard shank  
sharp tips

**0109115 TITANIUM**

formed shank  
delicate tips



**0109119 TITANIUM**

formed shank  
sharp tips



# Forceps

## Inamura Capsulorhexis Forceps, fine tapered

CAPSULORHEXIS

0109127 TITANIUM

round body  
14mm shank



0109129 TITANIUM

round body  
13mm shank  
\*(not shown)

## Small Incision Capsulorhexis Forceps

0109081 TITANIUM

sharp tips



0109082 TITANIUM

rounded tips

## Gutierrez-C Combi Microforceps-Scissors

2003102 TITANIUM

These microforceps were designed to enable grasping and cutting in a single manoeuvre.



The instrument permits access to the anterior chamber through a sub-1mm incision, and facilitates surgical manoeuvres decreasing surgery time.

## Micro Capsulorhexis Forceps

2003100 TITANIUM

angled tip, 23g





Whitfield Cilia Forceps

CILIA

0101264



Bennett Forceps

0101265



Round-end Cilia Forceps

0101266



Spring-action Cilia Forceps

0101268



Barraquer Cilia Forceps

0101267

8.5cm



0101269

10.5cm, heavy



Troutman Superior Rectus Forceps

MUSCLE

0101592



# Forceps

## Jameson Strabismus Forceps

MUSCLE

0101396

adult right  
7x2x0.6mm deep



0101394

adult left  
7x2x0.6mm deep  
\*(not shown)

0101397

child right  
4x1.8x0.6mm deep



0101395

child left  
4x1.8x0.6mm deep  
\*(not shown)

## Worth Strabismus Forceps

0101398

right



0101399

left  
\*(not shown)

## Iris Forceps, delicate serrated tips 0.5mm

IRIS

0101313

curved 25 degree tips



0101314

curved 60 degree tips



0101315

straight tips



## Graefe Iris Forceps

IRIS

**0101318**

0.75mm teeth



**0101323**

serrated tips, 1mm  
straight



**0101324**

serrated tips, 1mm  
curved



## Jewellers Forceps

JEWELLERS

**0101373**

No.3, straight  
medium



**0101375**

No.4, straight  
fine



**0101372**

No.5, straight  
very fine



**0101374**

No.7, curved



# Forceps

## Halsted Artery Mosquito Forceps, 125mm

CLAMPING

0101472

straight

0101473

curved

\*not actual size



## Wells Artery Forceps, 95mm

0101474

straight

0101475

curved

\*not actual size



## Khaw Conjunctival Clamp

0109185 TITANIUM

12mm



## Khaw/Shah Conjunctival Clamp

0109186 TITANIUM

4mm



## Serrafine Cross Action

0101462

straight  
38mm

0101463

straight  
featherweight



0101464

curved  
38mm





## Towel Clamp Forceps, cross action

CLAMPING

0101589



## Non Penetrating Towel Clamp

0101583

9cm



## Rampleys Forceps

0204136

17.8cm



\*(actual size not shown)

## Backhaus Towel Clamp

0204147

8.9cm



# Forceps

## Adson Forceps

UTILITY

0204132

serrated



0204134

0.3mm teeth

## Wills Eye Hospital Forceps

0101587

fine serrated jaws



## Clayman Intraocular Lens Introducing Forceps

LENS

0109102 TITANIUM

right hand



0109103 TITANIUM

left hand

\*(not shown)



## Tee End Intraocular Lens Forceps, for AC lenses

LENS

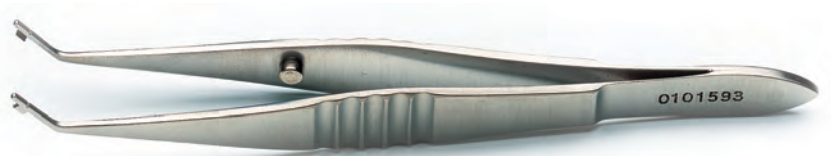
0109104 TITANIUM



## Lens Folding Forceps

0101593

for second generation foldable lenses



## Lens Folding Forceps, with mid jaw indicator

0109161 TITANIUM

Weiss body



0109440 TITANIUM

flat body



## Lens Holding Forceps, notched tips

0109163 TITANIUM

catch



0109164 TITANIUM

no catch

# Forceps

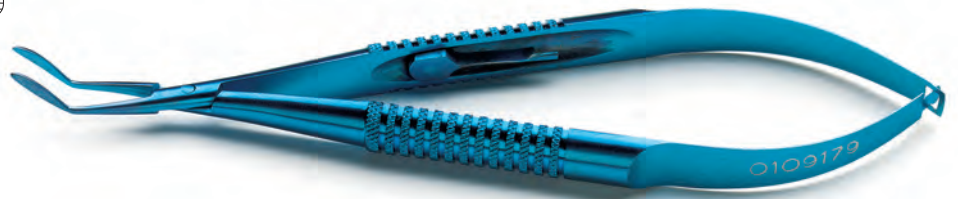
## Morcher Lens Forceps

LENS

0109446 TITANIUM  
holding



0109179 TITANIUM  
folding



## Scleral Plug Forceps

SCLERAL PLUG

0101605



## Watski Forceps

WATSKI

0101552  
for applying silicone sleeves  
on to retinal bands

