

**HS** JOHN WEISS  
INTERNATIONAL



## **Specialist Instruments**

Measuring

Cornea

Corneal Trephines

Cataract

Glaucoma

Sharps

Diamond Knives

## Castroviejo Caliper & Rule,

MEASURING

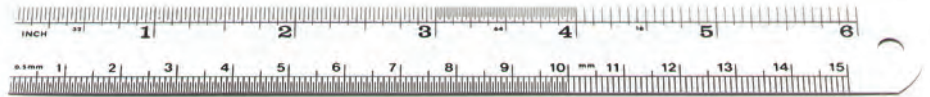
0120283

double-sided  
20mm scale  
0.5mm increments



## Rule

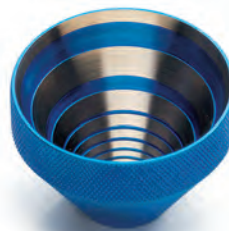
0120284



## Keratometer Hand-held

CORNEA

1501121 TITANIUM



## Flieringa Scleral Rings

stainless steel, set of 6 (13,15,17,19,21 & 23mm)

0114322



## Zone Markers

CORNEA

1501037 TITANIUM

7mm



1501038 TITANIUM

8mm

---

## Radial Markers

1501125 TITANIUM

6 blade

1501126 TITANIUM

8 blade



1501127 TITANIUM

12 blade

---

## Fine-Thornton Swivel Fixation Ring, 15 degree markings

1501094 TITANIUM

13mm diameter



1501087 TITANIUM

16mm diameter

# Specialist Instruments

## Scleral Depressor

0109522 TITANIUM



---

## Weiss Lasik Flap Lifter

0109526 TITANIUM



## Standard Trephines Box 2 sterile

### CORNEAL TREPHINES

<b>0111077</b>	6.00mm
<b>0111078</b>	6.25mm
<b>0111079</b>	6.50mm
<b>0111080</b>	6.75mm
<b>0111081</b>	7.00mm
<b>0111082</b>	7.25mm
<b>0111083</b>	7.50mm
<b>0111084</b>	7.75mm
<b>0111085</b>	8.00mm
<b>0111086</b>	8.25mm
<b>0111087</b>	8.50mm
<b>0111088</b>	8.75mm
<b>0111089</b>	9.00mm
<b>0111091</b>	9.25mm
<b>0111092</b>	9.50mm



## Long Handled Trephines Box 2 sterile

<b>0111137</b>	6.50mm
<b>0111138</b>	6.75mm
<b>0111139</b>	7.00mm
<b>0111140</b>	7.25mm
<b>0111141</b>	7.50mm
<b>0111142</b>	7.75mm
<b>0111143</b>	8.00mm
<b>0111144</b>	8.25mm
<b>0111145</b>	8.50mm
<b>0111146</b>	8.75mm
<b>0111147</b>	9.00mm
<b>0111148</b>	9.25mm
<b>0111149</b>	9.50mm



## Silicone Punch Blocks

**0111041**



# Specialist Instruments

## Weiss IOL Cutter

CATARACT

0109520 TITANIUM



Effectively and Safely cuts foldable IOL's through small incision.

## Weiss IOL Injector

0109512 TITANIUM



Plunger tip specifications according to cartridge and IOL type.

## Weiss Capsule Tension Ring Injector

2001001 TITANIUM

Designed for Morcher style CTR's



## Kelly Punch 1mm diameter tip (for punching Descemet's membrane)

GLAUCOMA

0101491

0101492

Cap to protect when not in use



## Scalpel Blades/Handles

SHARPS

0114197

number 11 scalpel blades,  
sterile, box 100

0114199

number 15 scalpel blades,  
sterile, box 100

0114198

scalpel handle number 9

0114200

scalpel handle number 3



## Blade Breaker/Holder

0114192

12cm handle



## Barraquer Blade Breaker, spring lock, smooth flat blades

0114195



## Foreign Body Needle & Spud in case

0114298



## Razor Blades breakable (1 x 10)

0114074



## Diamond Knives, standard

DIAMOND KNIVES



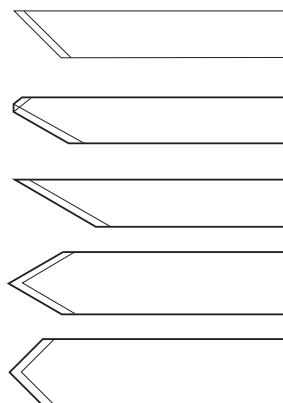
**0113052 TITANIUM**  
45 degree, blade 1mm wide

**0113053 TITANIUM**  
Trifacet, blade 1mm wide

**0113054 TITANIUM**  
30 degree, blade 1mm wide

**0113055 TITANIUM**  
Lance 60 degree, 1.4mm wide

**0113056 TITANIUM**  
Spear 90 degree, 1.4mm wide



## Diamond Knives, angled



**0113072 TITANIUM**  
Phaco Spear 3.2mm

**0113073 TITANIUM**  
Phaco Spear 3.0mm

**0113074 TITANIUM**  
Phaco Spear 2.8mm

**0113075 TITANIUM**  
Phaco Spear 2.5mm

**0113076 TITANIUM**  
Clear Cornea Spear 3.2mm

**0113077 TITANIUM**  
Clear Cornea Spear 3.0mm

**0113078 TITANIUM**  
Clear Cornea Spear 2.8mm

**0113079 TITANIUM**  
Clear Cornea Spear 2.5mm

**0113084 TITANIUM**  
Crescent, nine edged 3.0mm

**0113085 TITANIUM**  
Crescent, nine edged 2.0mm

